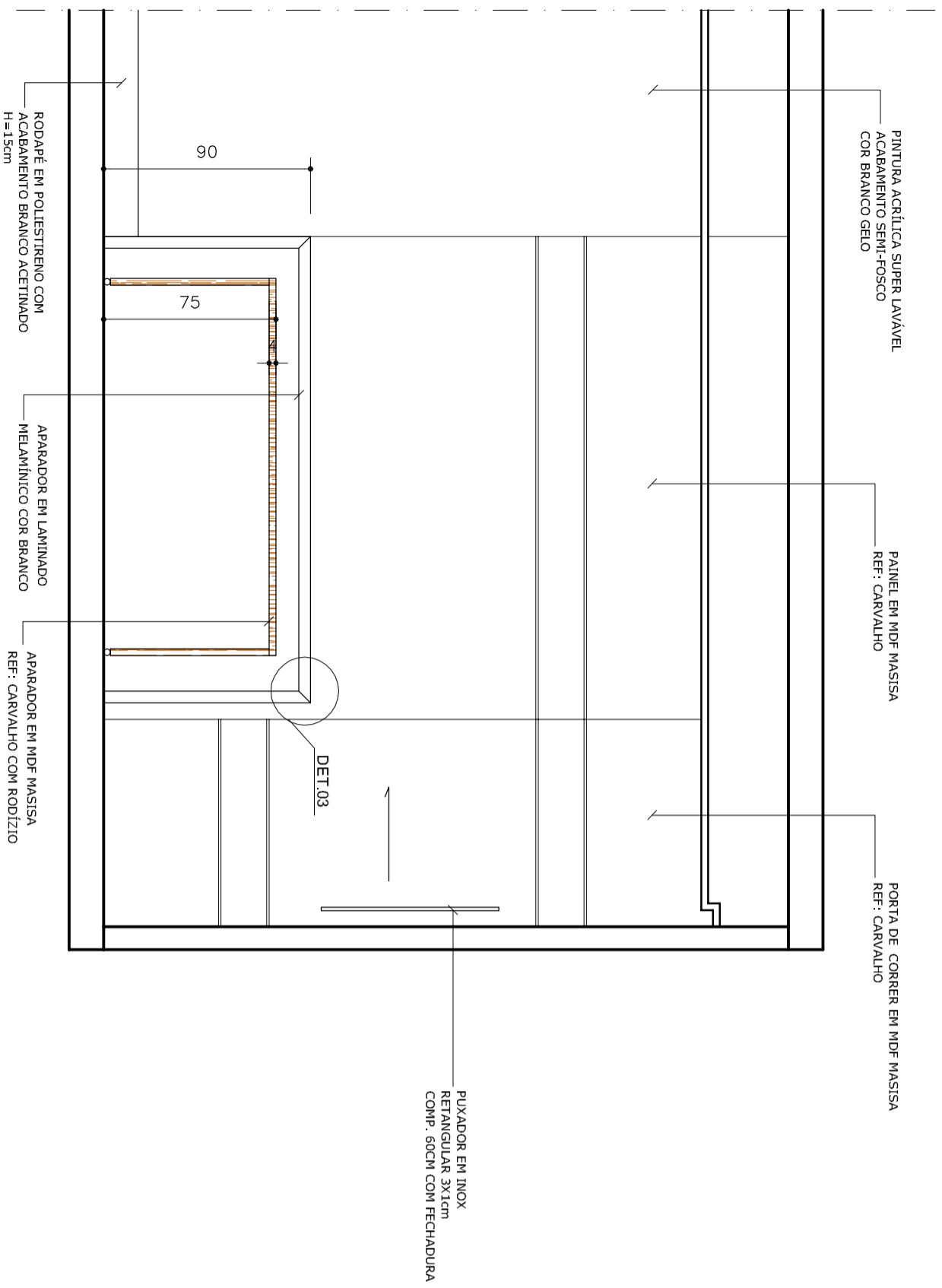


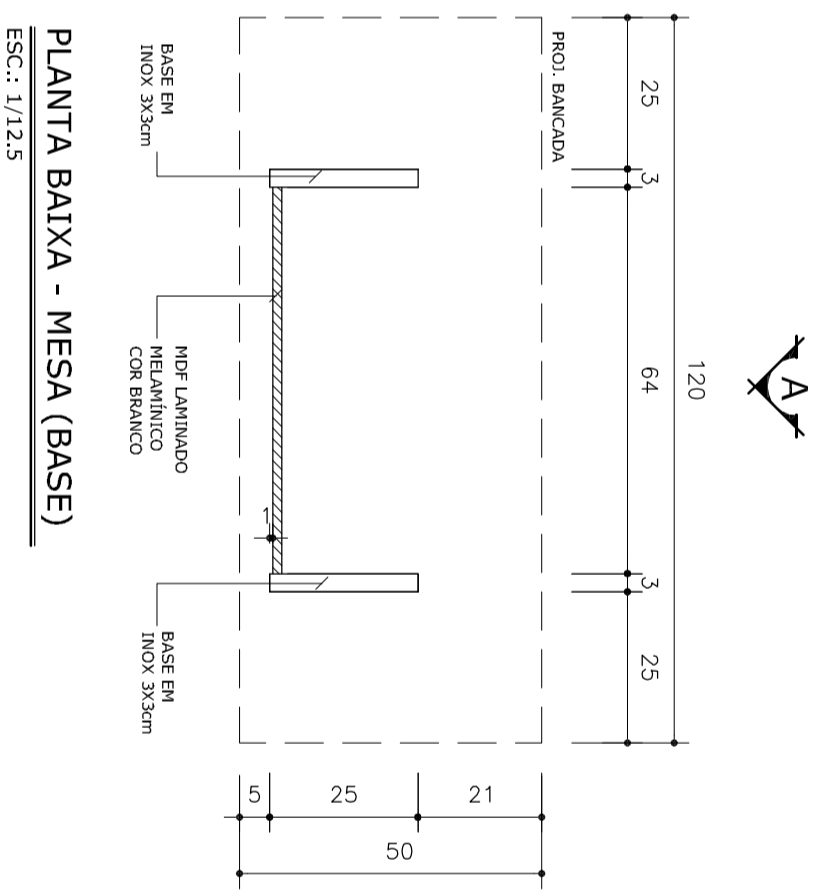
VISTA 'EE' - SALA DE REUNIÃO (PAINEL)

ESC.: 1/25



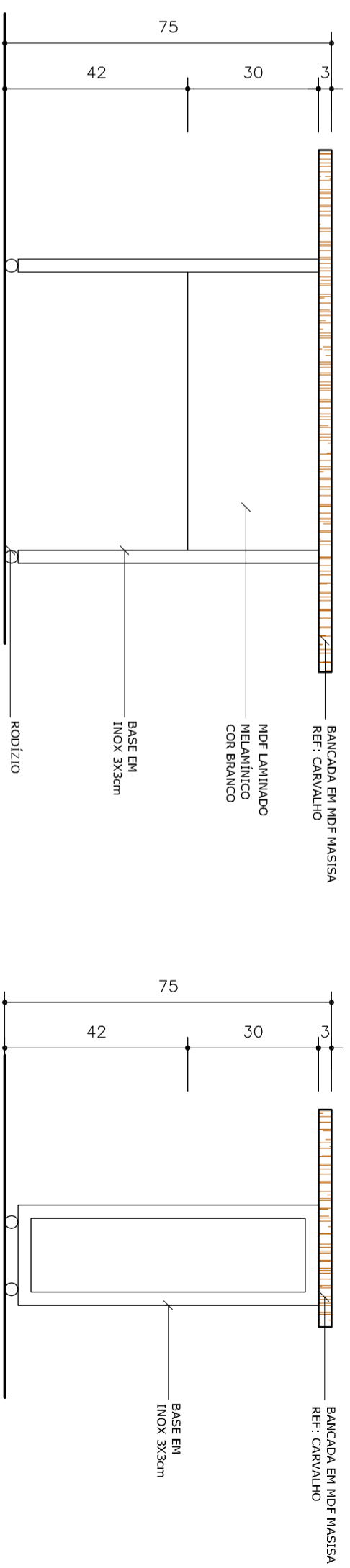
VISTA 'EE' - SALA DE REUNIÃO (APARADORES)

ESC.: 1/25



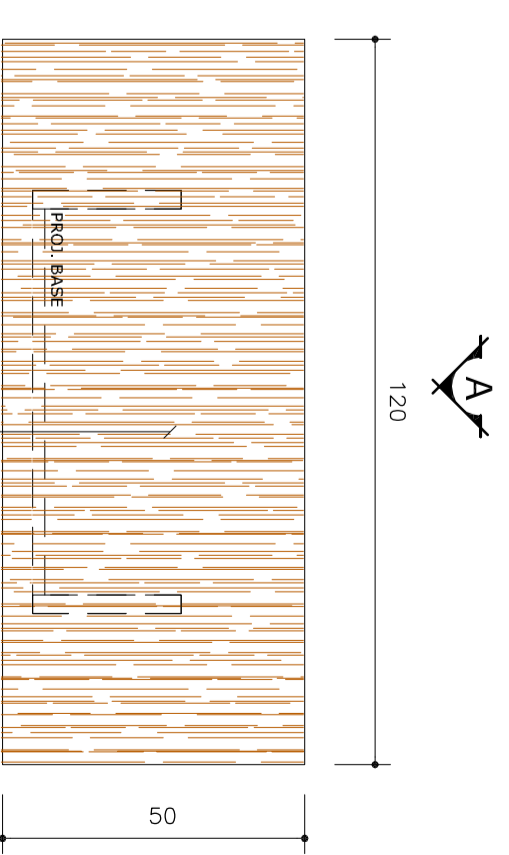
PLANTA BAIXA - MESA (BASE)

ESC.: 1/12,5



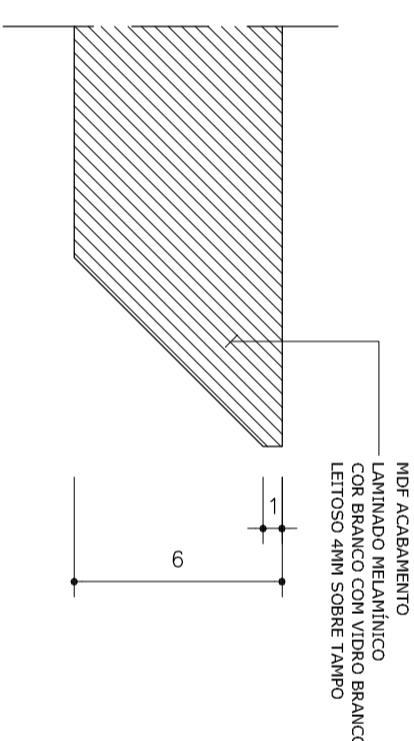
VISTA 'AA' - MESA

ESC.: 1/12,5



PLANTA BAIXA - MESA (BANCADA)

ESC.: 1/12,5

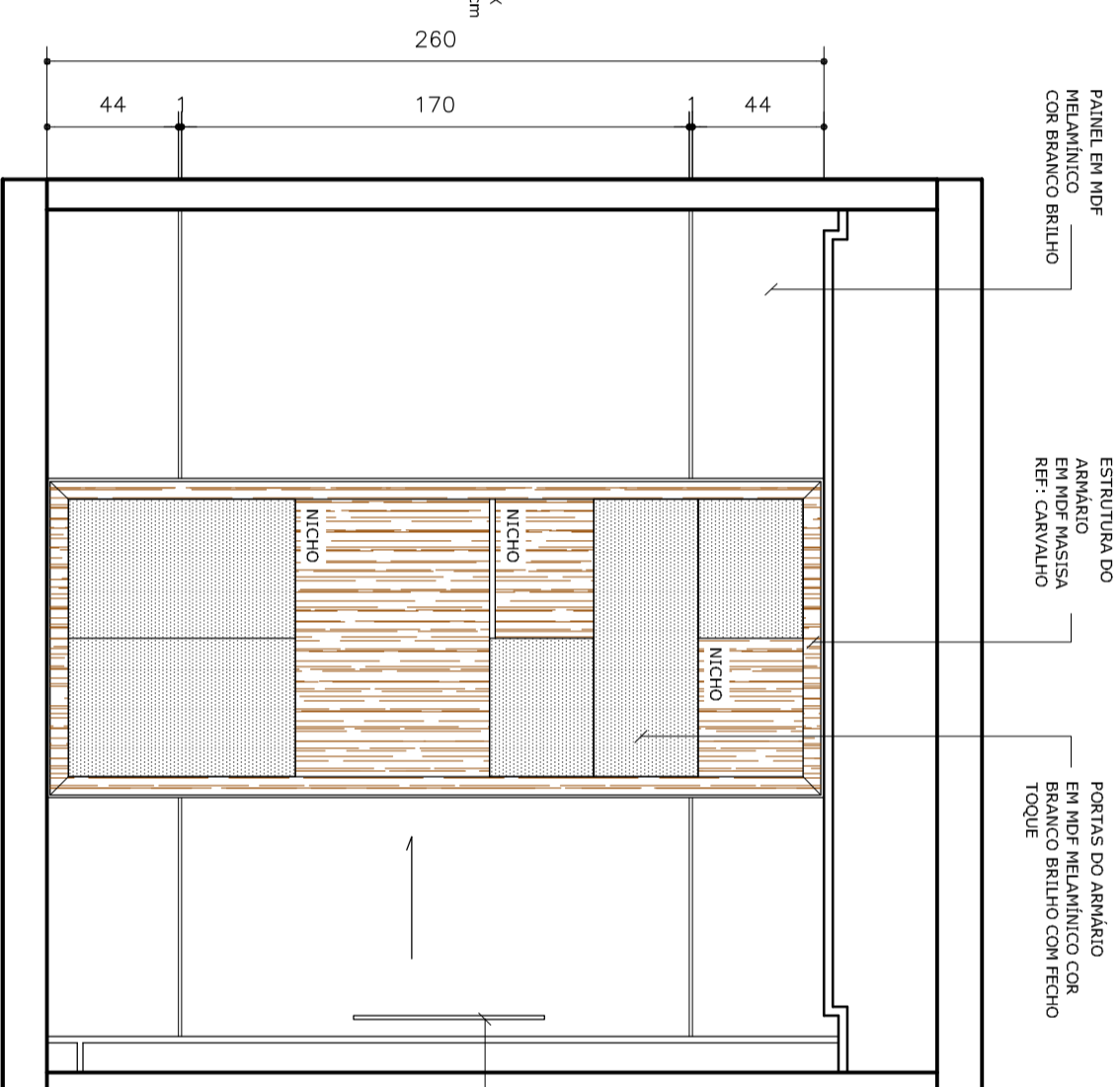
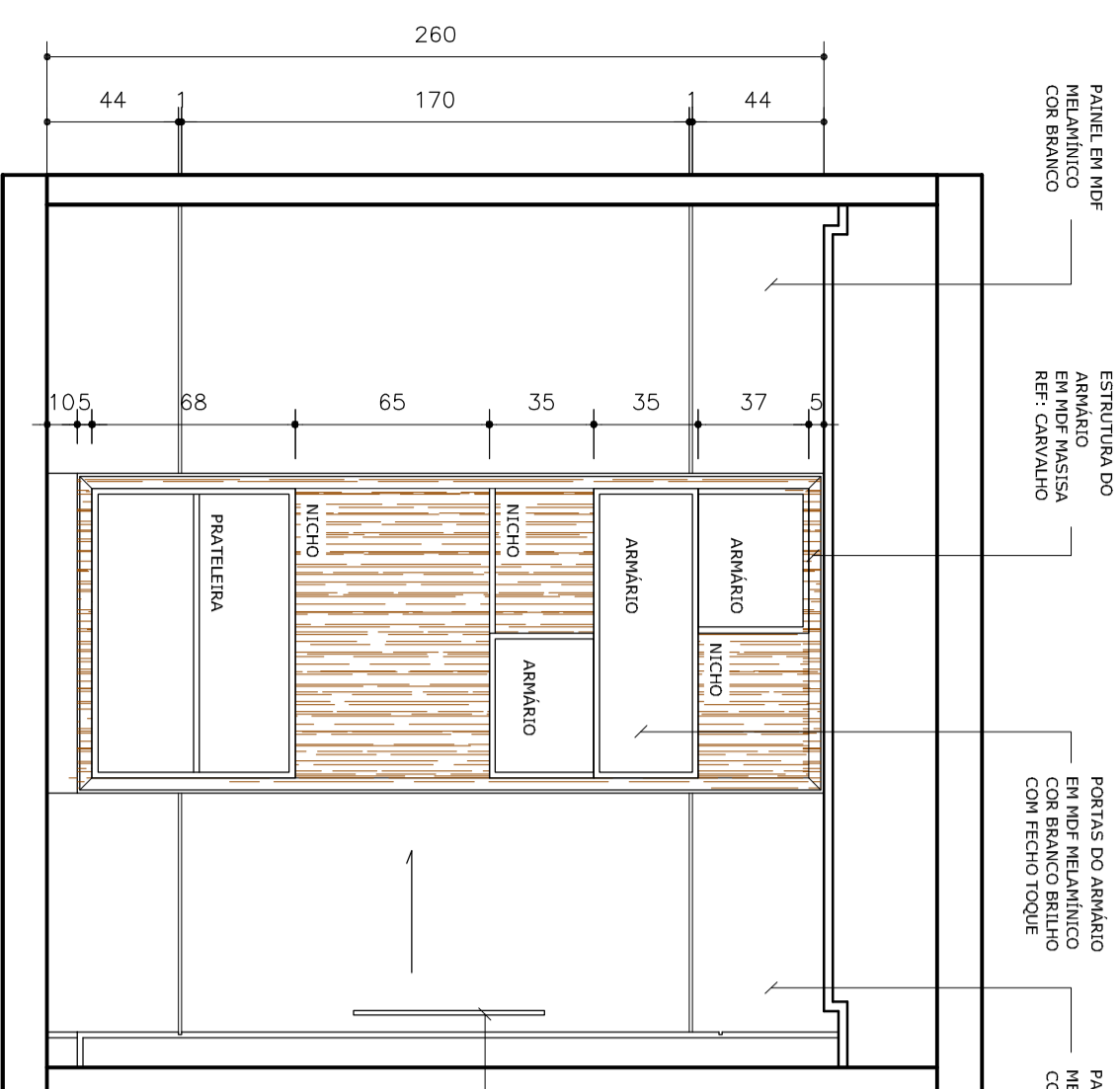


DETALHE 3 (APARADOR)

ESC.: 1/5

ARQUITETURA DE INTERIORES EXECUTIVO

PROJETO	ARQ. TITO AUGUSTO ABREU DE CARVALHO CAU 127/166			
PROPRIETÁRIO	SEDE CREFITO ES			
ENDEREÇO	AV. NOSSA SENHORA DA PENHA, SANTA LÚCIA, VITÓRIA - ES			
CONTEÚDO	DETALHAMENTO DE MARCENARIA - SALA DE REUNIÃO			
REVISÃO DE PRANCHA		PRANCHAS MODIF.	VISTO RESP. TEC.	VISTO
N.º REV.	PRANCHA	DESCRÇÃO DA REVISÃO	RES.P. TEC.	VISTO
PRANCHA		PRANCHA		1/25
DATA		SETEMBRO/2017		03/03
ESCALA		1/25		

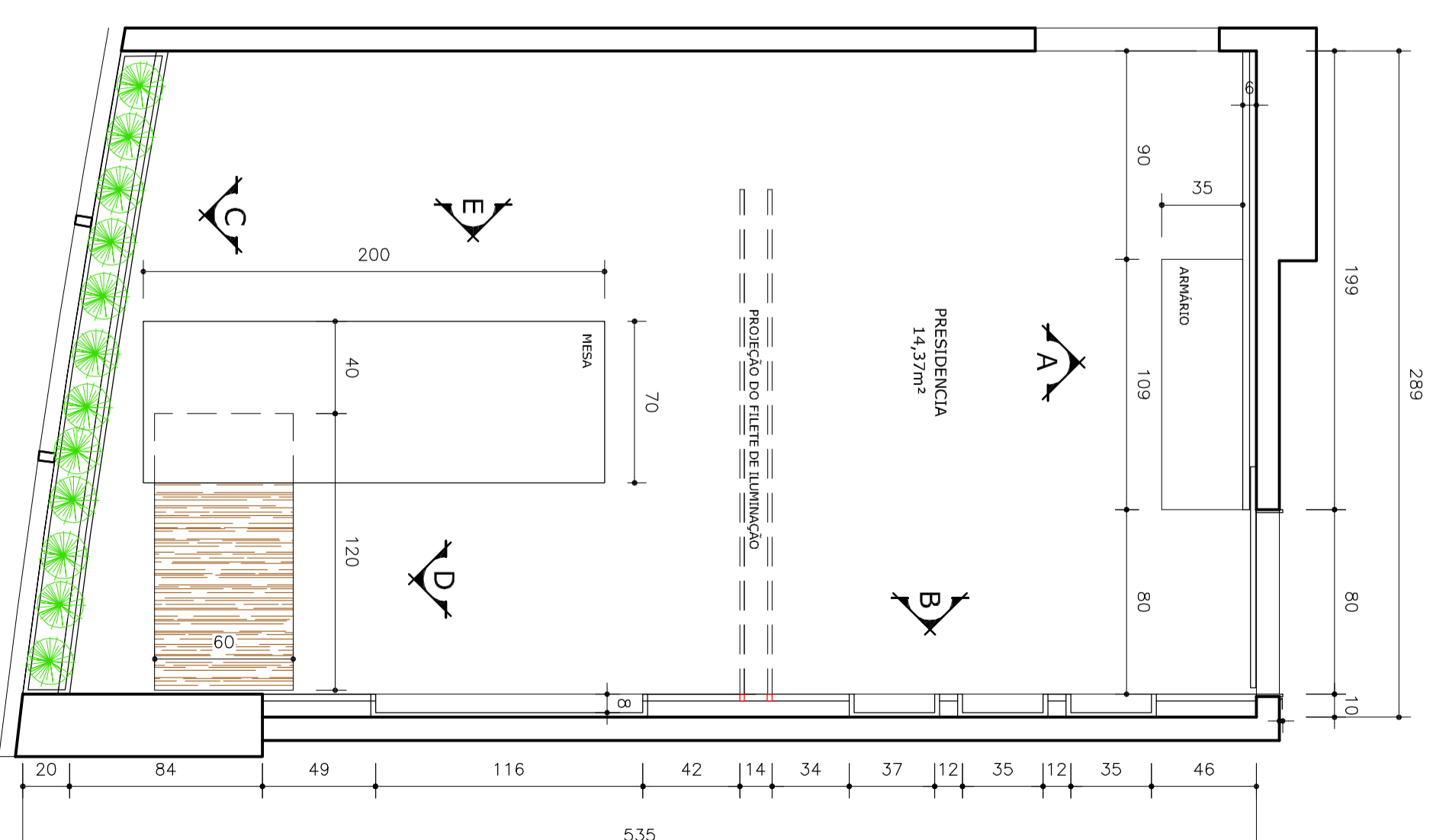
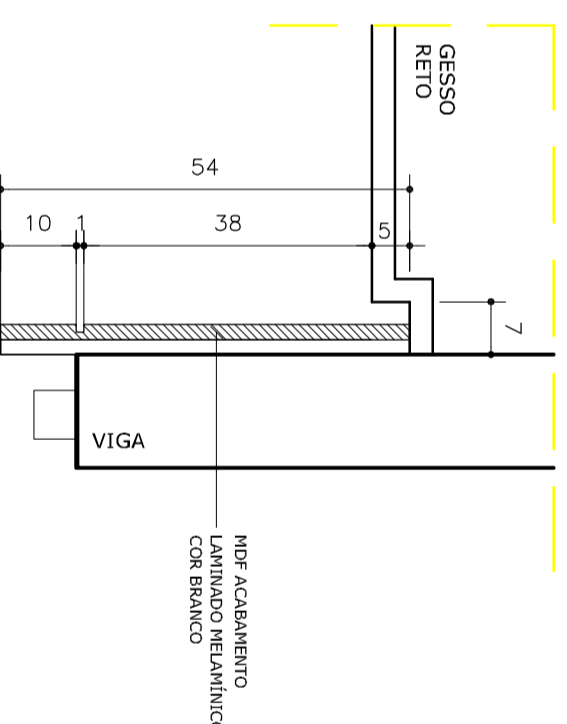
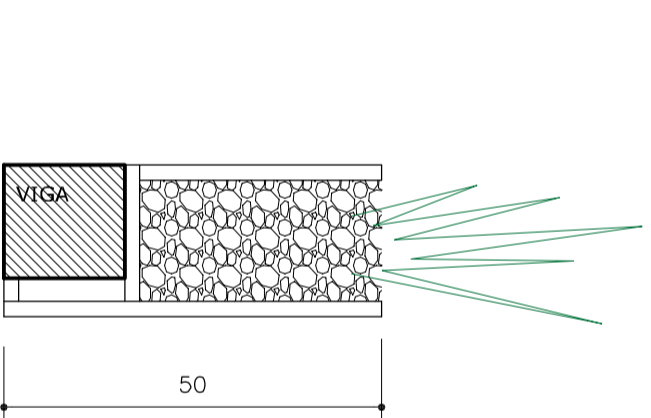
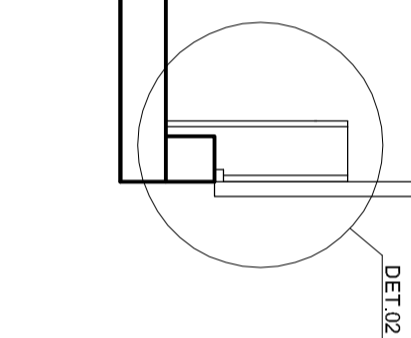
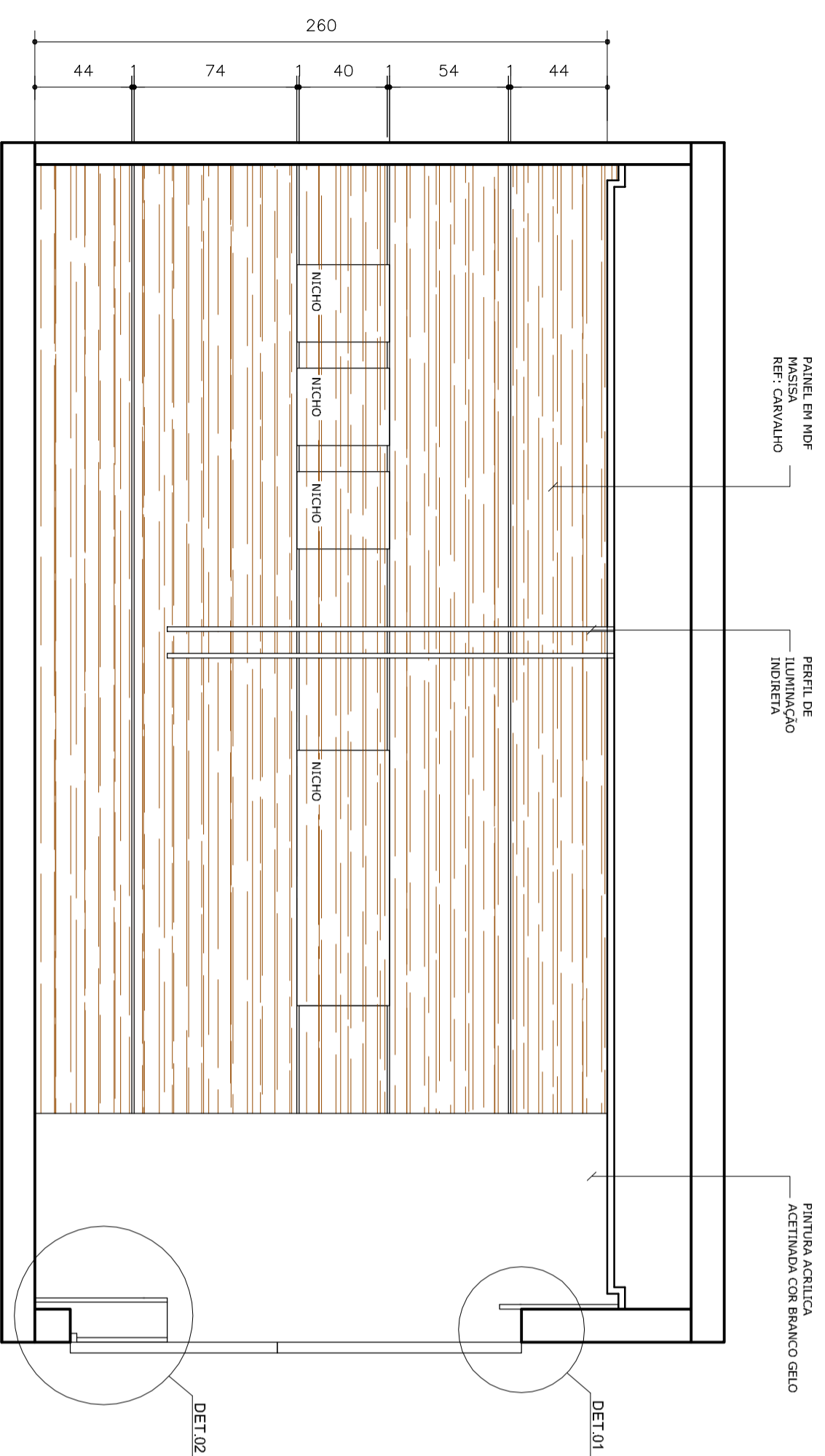


VISTA 'AA' - PRESIDENCIA (INTERNA)

ESC.: 1/25

VISTA 'AA' - PRESIDENCIA (EXTERNA)

ESC.: 1/25



ARQUITETURA DE INTERIORES EXECUTIVO

PROJETO		ARQ. TITO AUGUSTO ABREU DE CARVALHO CAU 127/166	
PROPRIETÁRIO	SEDE CREDITO ES	DATA	SETEMBRO/2017
ENDEREÇO	AV. NOSSA SENHORA DA PENHA, SANTA LÚCIA, VITÓRIA - ES	ESCALA	
CONTEÚDO	DETALHAMENTO DE MARCENARIA - PRESIDÊNCIA	PRANCHAS MODIF.	RES.P. TEC.
REVISÃO DE PRANCHA		PRANCHA	1/25
N.º REV. PRANCHA	DESCRIÇÃO DA REVISÃO	01/02	